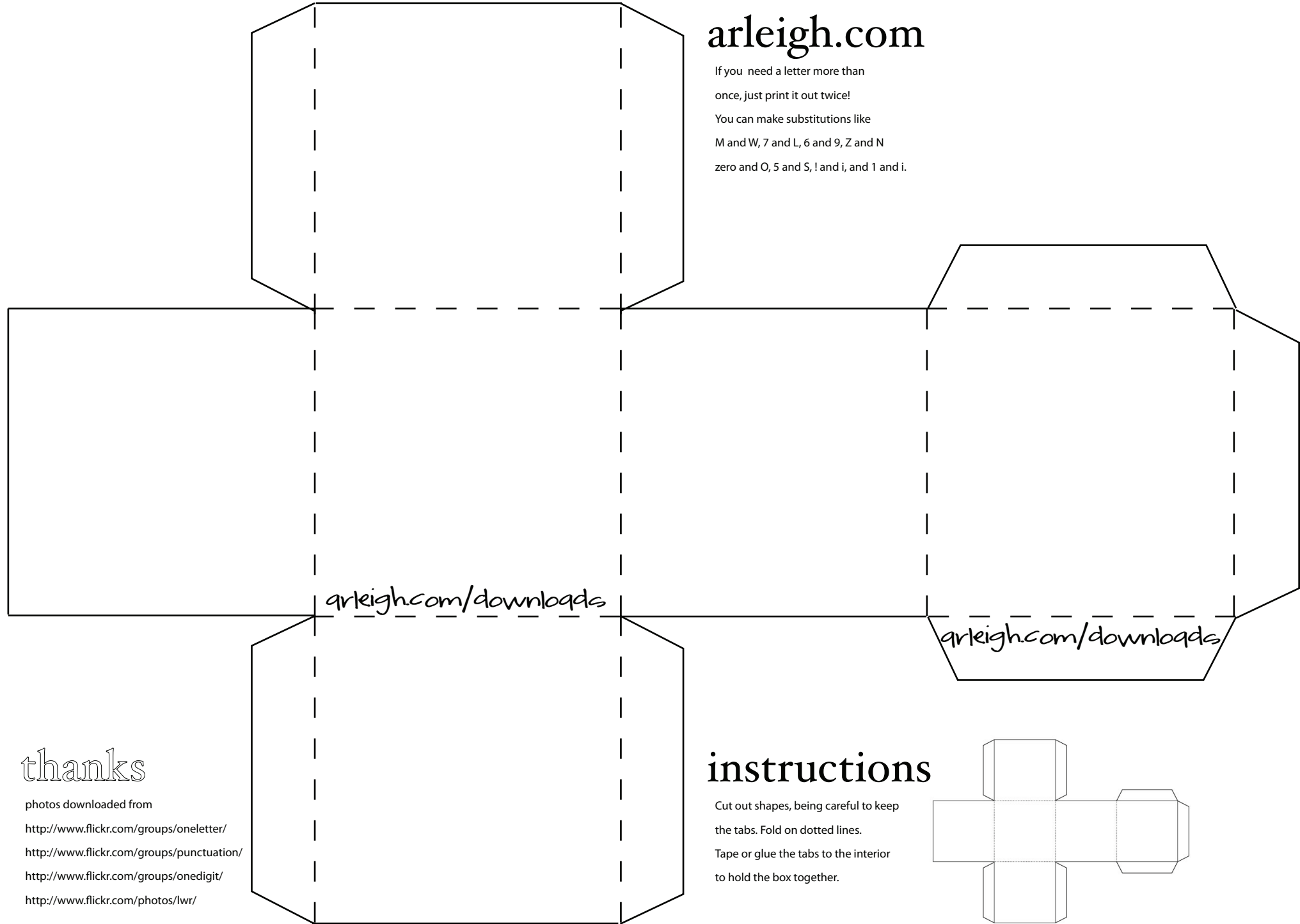


# arleigh.com

If you need a letter more than  
once, just print it out twice!  
You can make substitutions like  
M and W, 7 and L, 6 and 9, Z and N  
zero and O, 5 and S, ! and i, and 1 and i.



thanks

photos downloaded from  
<http://www.flickr.com/groups/oneletter/>  
<http://www.flickr.com/groups/punctuation/>  
<http://www.flickr.com/groups/onedigit/>  
<http://www.flickr.com/photos/lwr/>

## instructions

Cut out shapes, being careful to keep  
the tabs. Fold on dotted lines.  
Tape or glue the tabs to the interior  
to hold the box together.

